

Sugarcane and Sorghum - Leaf Sap Sampling Guide

Time of sampling: Take samples in the morning before 11 am and temperatures less than 80°F to ensure adequate leaf tension and moisture. Avoid sampling in the rain. Store samples in a cooler.

Sample Size: Collect 80 grams of both new (young) and old leaves for a collected total of 160 grams per sample set. Collect new and old leaves separately. Use quart sized zip lock bags.

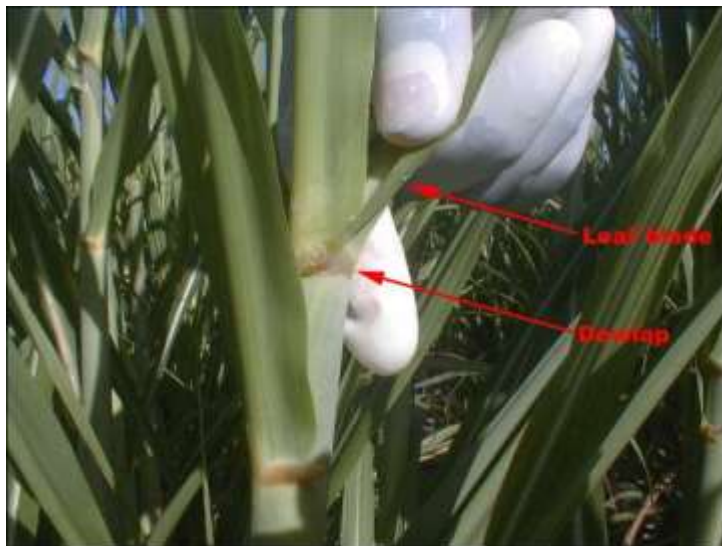


Photo from IFAS Extension 1

Initial Sample: Begin sampling when 30 cm tall in conjunction with “Quick soil”. New leaves (select the first leaf with a visible dewlap) only. Place stacked leaves in zip lock bag.

Consecutive Samples: New and Old leaf set every 2 weeks.

NEW, first leaf with a visible dewlap from the growing tip of the plant. Place stacked leaves in zip lock bag labeled NEW.

OLD, the lowest still healthy and functional leaves on the plant. From these leaves cut out the middle 4 inches. Removing the bottom 6 inches from the stalk this segment and the top from the tip down to this segment. Place stacked leaves in separate zip lock bag labeled OLD.

General:

1. Avoid outer rows and 1st 20 feet of a row.
2. Sample leaves with average leaf quality. Sample areas of abnormal growth separately.
3. Sample consistently either on the sunny or shady side of the plant.
4. If leaves are wet at sampling lightly pat dry before shipping (moisture can influence results).
5. Sap analysis data works best when used in progression. The more samples the better crop nutrient uptake can be illustrated and understood.
6. **Keep samples cool.** Bring cooler to fields to store samples. **Ship 2-day or overnight on M/T/W (morning arrival time) with ice packs. Samples should not come into direct contact with ice packs.**

Sampling & sap analysis questions: contact your distributor or NEW AGE Labs (269) 637-5658